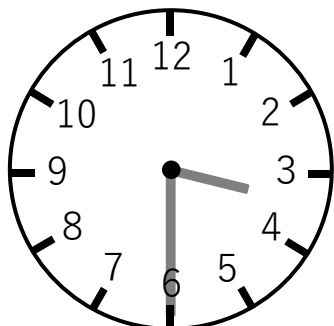
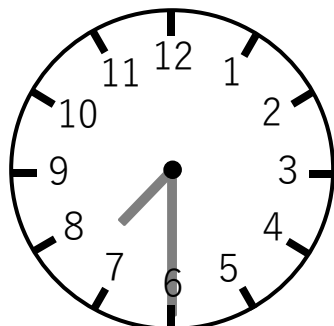


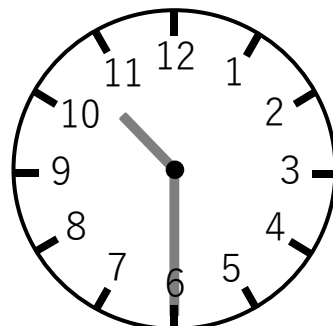
① つぎの時計は何時何分ですか。



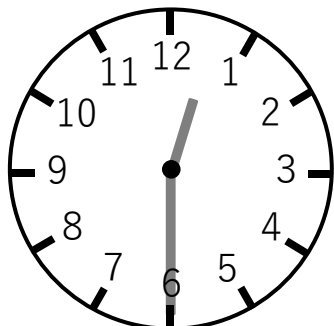
( 3 時 30 分)



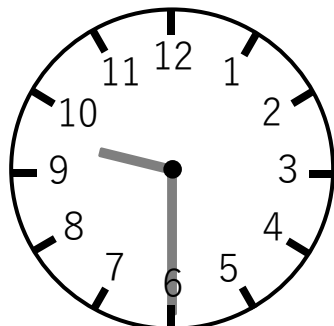
( 7 時 30 分)



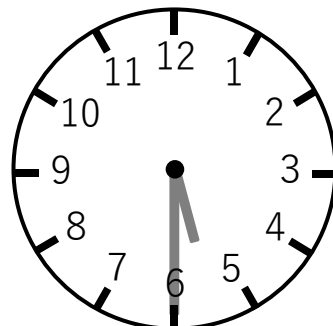
( 10 時 30 分)



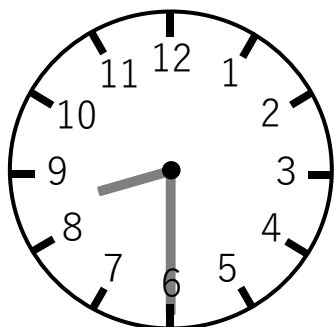
( 12 時 30 分)



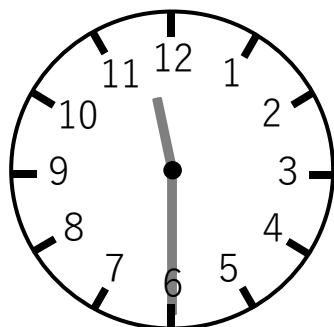
( 9 時 30 分)



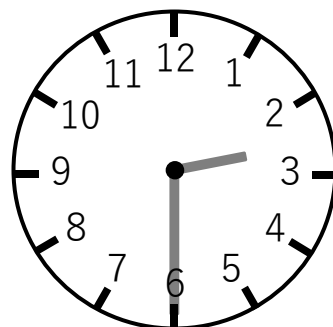
( 5 時 30 分)



( 8 時 30 分)



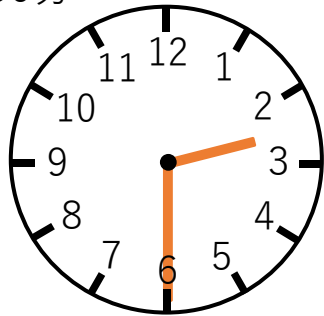
( 11 時 30 分)



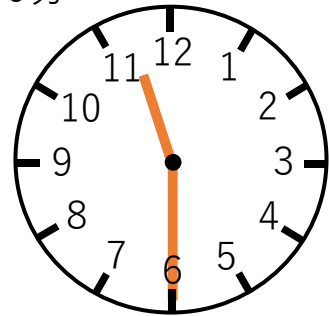
( 2 時 30 分)

① つぎのじこくを時計に書きましょう。

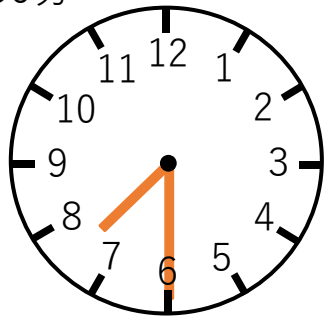
2時 30分



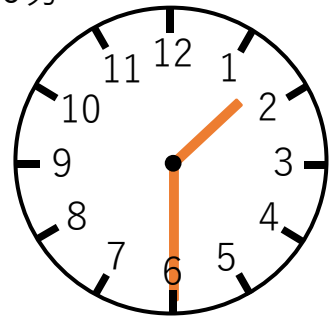
11時 30分



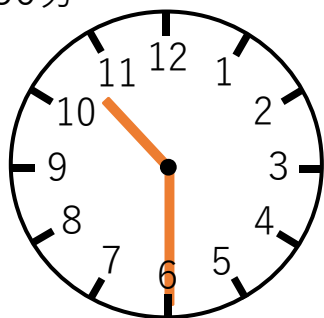
7時 30分



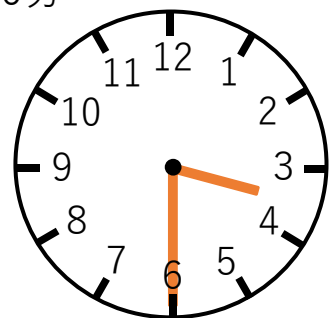
1時 30分



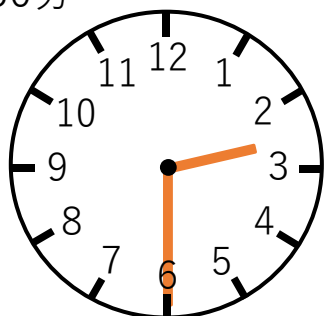
10時 30分



3時 30分



2時 30分



4時 30分

