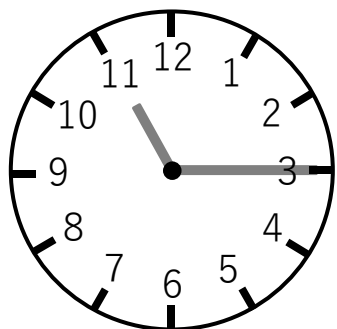
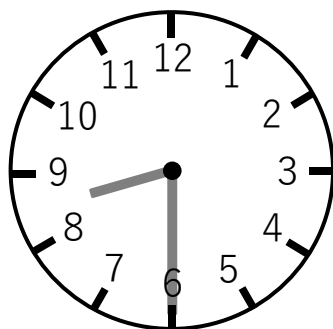


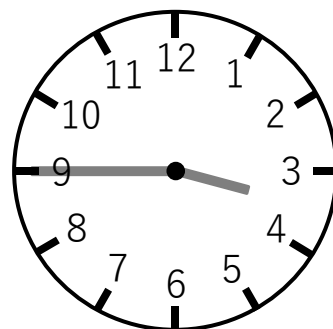
① つぎの時計は何時何分ですか。



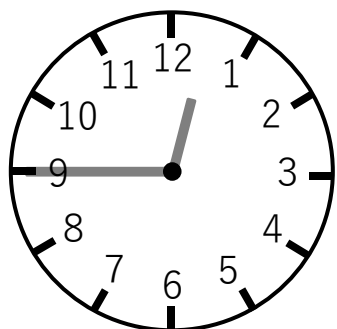
( 11 時 15 分 )



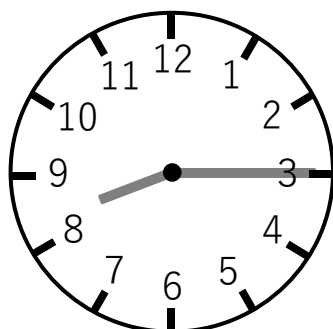
( 8 時 30 分 )



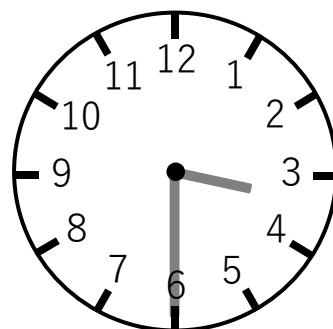
( 3 時 45 分 )



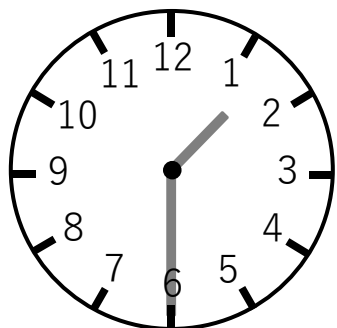
( 12 時 45 分 )



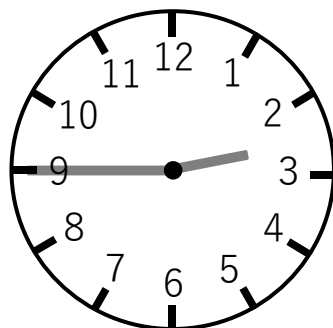
( 8 時 15 分 )



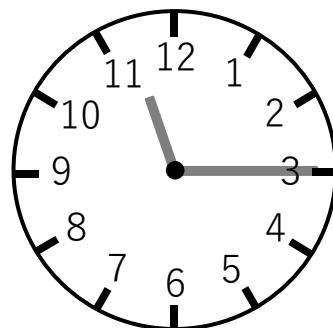
( 3 時 30 分 )



( 1 時 30 分 )



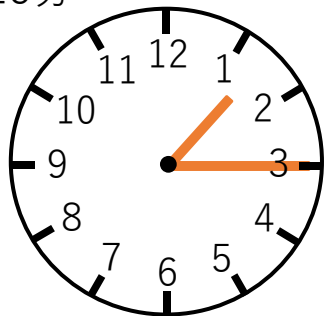
( 2 時 45 分 )



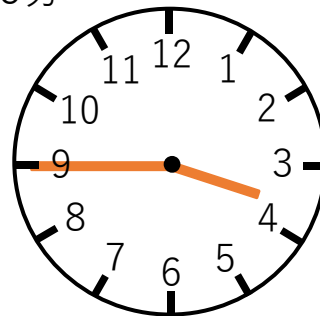
( 11 時 15 分 )

① つぎのじこくを時計に書きましょう。

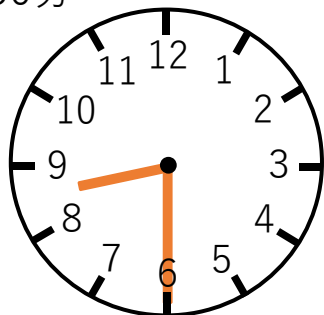
1時 15分



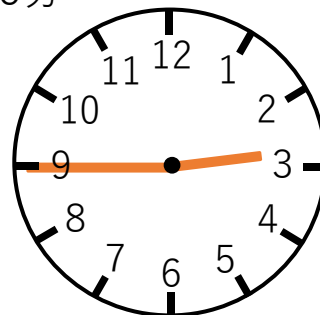
3時 45分



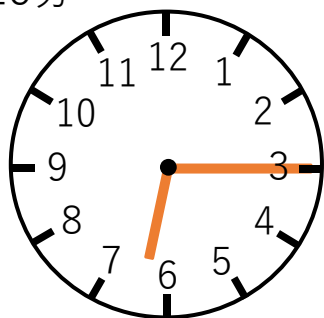
8時 30分



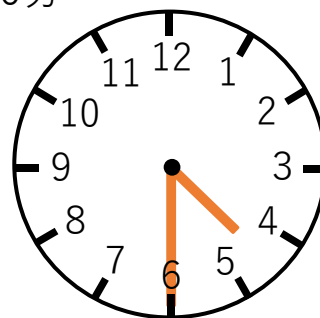
2時 45分



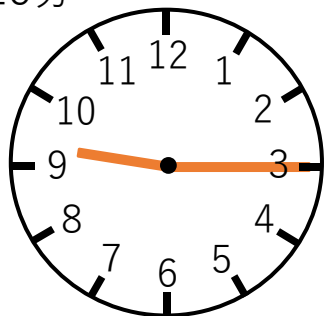
6時 15分



4時 30分



9時 15分



6時 45分

